

**ORIGINAL
THEATRE ARTISTS
MAKE THE BEST
RECORDS—**



**HEAR THEM ON
Columbia**

SONS O' GUNS

10-inch Records, 3/- each.

SONS O' GUNS, Piano Medley—Introducing
Cross Your Fingers : Why? It's You I Love;
Let's Merge.

Played by BILLY MAYERL No. DB 188

CROSS YOUR FINGERS, and WHY?
Sung by BILLY STEPHENS (Baritone)

No. DB 184

WHY? Fox Trot*, and CROSS OUR
FINGERS, Fox Trot*

Played by BEN SELVIN and His Orchestra.
No. CB 81

IT'S YOU I LOVE, Slow Fox Trot*, and
I'M THAT WAY OVER YOU, Fox Trot
(Not from "Sons O' Guns").

Played by RAY STARITA and His Band.
No. CB 80

(*With Vocal Chorus).

. . .

THE LOVE RACE

THE THREE MUSKETEERS

BITTER SWEET

COCHRAN'S 1930 REVUE

. . .

On Sale Everywhere

Other
Latest
London
Theatre
Hits from—

Columbia



Prince Edward Theatre

OLD COMPTON STREET, W.1



DONALD STUART PRODUCTIONS, LTD.

PRESENT

SEXTON BLAKE

A Detective Story

- in Four Acts -

by

DONALD STUART



3d.

THE 1930 CHOCOLATE

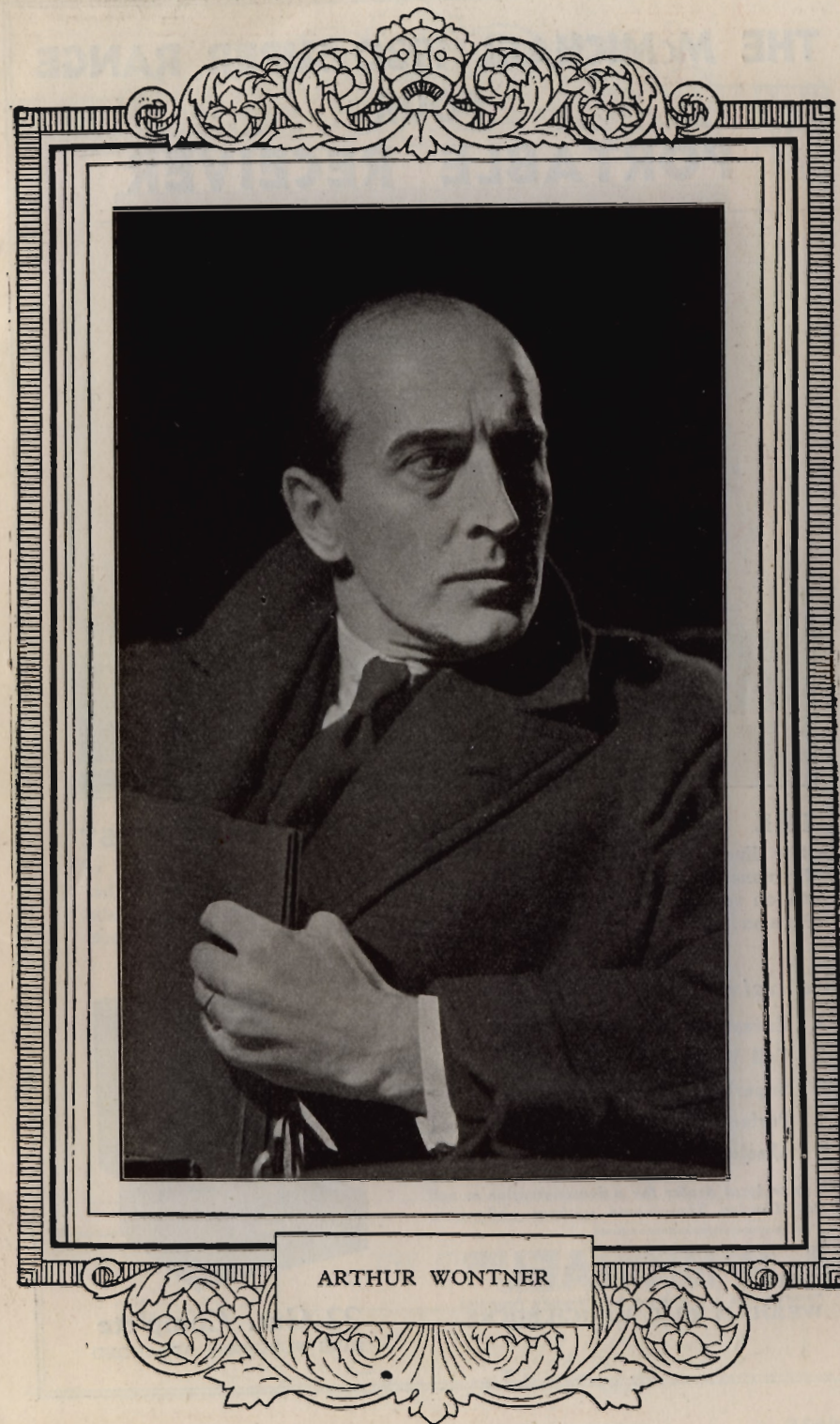
HERE is absolutely the latest development in Chocolates. With rare artistry, our experts have created this new confection—made with delicate care for the refinements of modern taste. The most alluring centres—the most fascinating shapes and sizes—charm every mood—Miss 1930 will find them *de rigueur*.



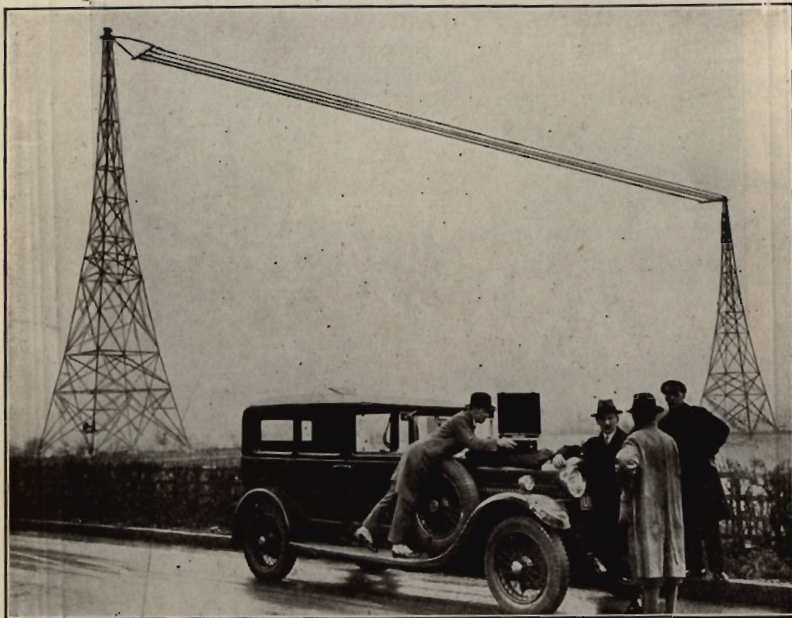
**LYONS'
CORNER
HOUSE
CHOCOLATES**

4'. for a
pound

J. LYONS & CO., LTD., CADBY HALL, LONDON, W.14.



THE McMICHAEL 1930 SUPER RANGE FOUR PORTABLE RECEIVER



THE RESULT OF AN EXTRAORDINARY TEST

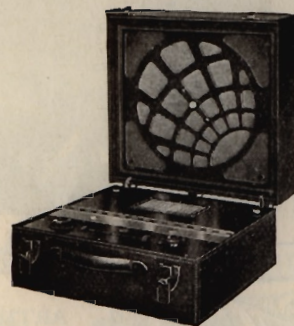
The illustration shows a McMichael Super Range Four at the gates of Brookman's Park. Under independent observation not only was either station received completely clear of the other, but Daventry, 5XX, Radio Paris and various short wave stations were also received clear from interference.

We claim for our Receiver : —

1. Exceptional Range.
2. Full Volume.
3. Superlative tonal quality.
4. Perfect workmanship and appearance.
5. Absolute selectivity.

Ask your local dealer for a demonstration or call at our London Showrooms without obligation.

L. McMICHAEL LTD
Manufacturers of Wireless and Scientific Apparatus
WEXHAM ROAD, SLOUGH, BUCKS.



22 Gns. Complete
HIRE PURCHASE ARRANGED



GLAVE'S

THE HOUSE OF FASHION VALUES

Here are typical examples of the latest creations in Coats to be seen at the new Glave's



CHARMING COAT
in Black Caracul
Cloth, with Nutria
Lamb long roll
collar and cuffs.
Beautiful tailoring
and exquisite lines
make this a par-
ticularly appealing
model. In S.W.,
W. and W.X. sizes.

6 ¹/₂ GUINEAS



AUTUMN MODEL
in the new all-wool
Tricotine, with first-
grade Nutria Lamb
roll collar and cuffs.
Perfectly tailored and fin-
ished. Semi-fitting and lined
throughout. Season's latest
shades, including Black and
Navy. In S.W. and W. sizes.

7 GUINEAS

HENRY GLAVE LTD.

NEW OXFORD STREET, LONDON, W.C. 1

ALMOST ADJOINING TOTTENHAM COURT ROAD TUBE STATION



PAULINE LORING

HAVE YOU FOUND HIM?

*Mr Donald Stuart was looking for an ideal tailor
..... one who made GOOD clothes at economical
prices and*



*but.....that was many years ago..... and
we still enjoy his patronage!*

*And Always Will !!
Donald Stuart*

Author of Sexton Blake

LOUNGE SUITS	from 5 Gns
DINNER SUITS	from 7 Gns
EVENING DRESS	from 8 Gns
OVERCOATS	from 5 Gns
FREE VALETING SERVICE	

CREDIT FACILITIES (IF DESIRED) WITHOUT REFERENCE OR ENQUIRIES

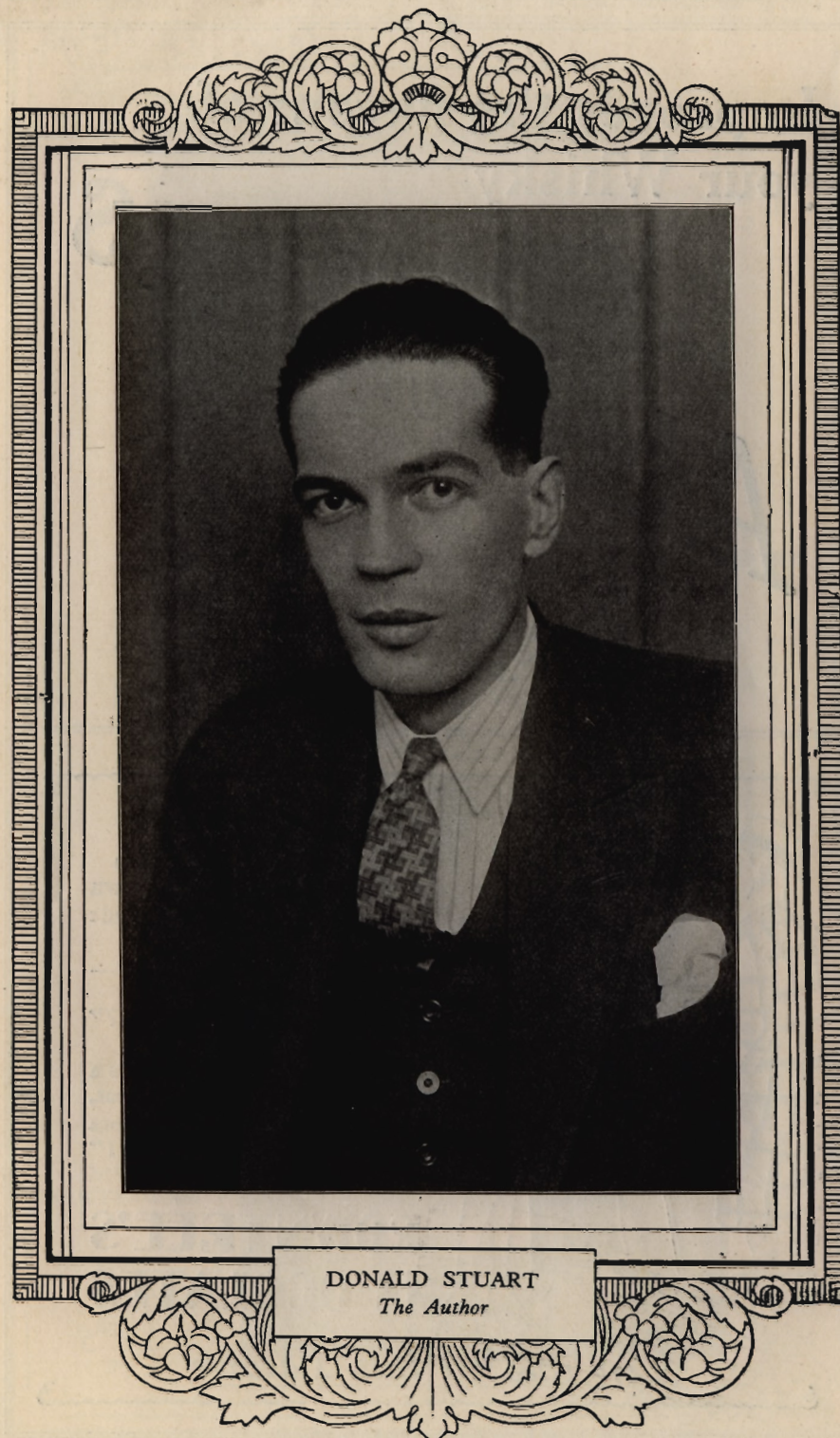
KEITH BRADBURY LTD

137/141, REGENT STREET, LONDON, W.1
(FIRST FLOOR)

Telephone: REGENT 5288

Hours: 9-7, Saturdays 9-1

CATALOGUE CONTAINING INTERESTING SUGGESTION - ON REQUEST



DONALD STUART
The Author

Improves the flavour of
your Whisky

Apollinaris

NATURAL
MINERAL WATER

On Sale at all Bars



When Mr. Brown came up to
town
He asked a knowing friend:

"I want to go and see a show—
What do you recommend?"

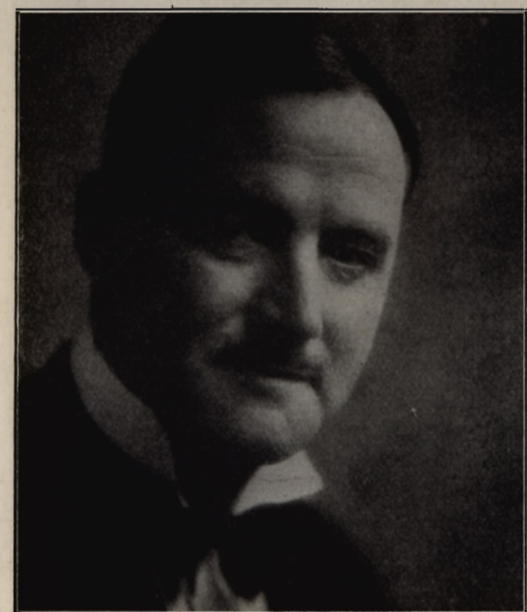
His friend said: "*Any* play's a
treat,
If you've got Rowntree's Chocs
to eat!"

**ROWNTREE'S
CHOCOLATES**

On sale in this Theatre



DORA
GREGORY



DAVID
HAWTHORNE

Prince Edward Theatre

Proprietors HAY HILL SYNDICATE, LTD.
Licensed by the Lord Chamberlain to H. T. RICHARDSON

EVERY EVENING at 8.15

Matinees : WEDNESDAYS and SATURDAYS at 2.30

SEXTON BLAKE

Characters in the order of their appearance.

P.C. Holt	JAMES STADDEN
P.-Sergt. Lightfoot	GEORGE FEARON
Muriel Raeburn	EVE GRAY
Sexton Blake	ARTHUR WONTNER
Tinker	JOHN RODERICK
Creek	QUINTON MACPHERSON
Paul Cairns	WILFRED BABBAGE
Detective-Inspector Coutts	DAVID HAWTHORNE
Dr. Fisher	WALTER HERALD
Leslie Waring	ARTHUR MACRAE
Mrs. Bardell	DORA GREGORY
Lydia Carrington	PAULINE LORING
Pedro	HIMSELF
Creeper	HARCOURT BROOKE
Selton	FRANK TENNANT
Mason	RICHARD SYMONS
P.C. Smithson	EDMOND TOTTENHAM
Dr. Fane	ROSS FAIRFAX
Signalman	FLETCHER LIGHTFOOT

The Play produced by the Author.

September 22nd



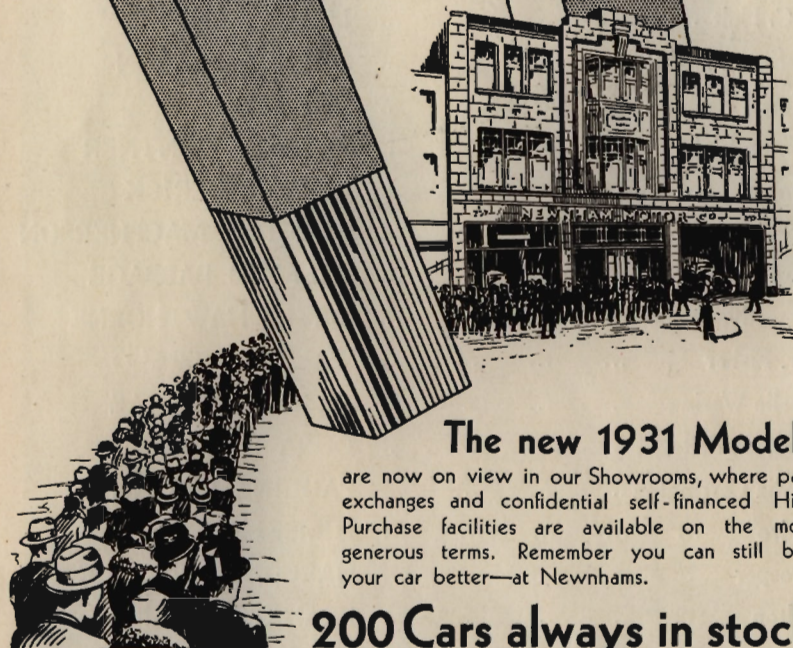
LIBERTY SILK SHAWLS

are famed throughout the world for their BEAUTY OF DESIGN and for their DELIGHTFUL COLOURING. The example illustrated is printed by hand at Liberty & Co's own Print Works Merton Abbey... on a silk ground interwoven with a design in gold thread

£6.10.0

LIBERTY & CO
REGENT STREET, LONDON

What's this attraction at NEWNHAMS?



The new 1931 Models

are now on view in our Showrooms, where part exchanges and confidential self-financed Hire Purchase facilities are available on the most generous terms. Remember you can still buy your car better—at Newnhams.

200 Cars always in stock

NEWNHAM HOUSE

237, Hammersmith Road, London, W.6

Telephone: Riverside 4646.

Streatham Showrooms - - 136/138, Streatham Hill, S.W.2

Telephone: Streatham 8830.

Synopsis of Scenery

ACT I.

- Scene 1. Outside 18a, Lowndes Square, S.W.1. (2 a.m.)
- Scene 2. Sir John Raeburn's Bedroom
- Scene 3. Outside 18a, Lowndes Square, S.W.1.

ACT II.

- Scene 1. Sexton Blake's Consulting Room, Baker Street, W.1.
(three hours later)
- Scene 2. Baker Street
- Scene 3. Sexton Blake's Consulting Room

ACT III.

- Scene 1. The Cellar of an Empty House in Finchley Road
(ten minutes before the end of Act II.)
- Scene 2. Sexton Blake's Consulting Room

ACT IV.

- Scene 1. Sexton Blake's Consulting Room
- Scene 2. Baker Street
- Scene 3. Outside 18a, Lowndes Square
- Scene 4. Baker Street
- Scene 5. Sunningvale Level Crossing

Orchestra under the direction of ERNEST VOUSDEN

LADIES!

REJUVENATE YOURSELVES

BY SEEING

ALMOST A HONEYMOON

**RESTAURANT
FRASCATI**

THREE MINUTES WALK
FROM THIS THEATRE

OXFORD STREET, W.

DÉJEUNER 4/6

DINER 7/6

DANCING
NIGHTLY

SUPPERS SERVED

Open on Sundays
from 6.0 to 11.0 pm



Scenery built and painted by HARRY CLIFFORD, St. John's Wood Scenic Studios
Dresses worn by Miss Eve Gray and Miss Pauline Loring by MARGARET MARKS,
Knightsbridge.

Hats by FRANCOIS BARRY, 1, Margaret Street, W.1.

Pyjamas and Negligee worn by Miss Eve Gray in Act I., by MADAME FOX, LTD.

Furniture by J. S. LYON, LTD., High Holborn, W.C.

All Electrical Fittings and China Figures used in Act I., Scene 2, supplied by
Messrs. CORALAYS, 289, Regent Street, W.1

The Motor Car used in Act IV., kindly supplied by STEWART & ARDERN, LTD., sole
London Distributors of Morris Cars, Morris House, 103, New Bond Street, W.1

The "Triumph" Motor Cycle used in Act II., kindly supplied by the TRIUMPH
COMPANY, LTD., Coventry.

The Books used in this play were kindly supplied by Messrs. W. & G. FOYLE, LTD.,
121, Charing Cross Road, W.C.2.

The Piano in Orchestra by Messrs. CRANE, 149, Oxford Street, W.

Cigarettes by ABDULLA

General Manager	} For Donald Stuart Productions Ltd.	} JAMES GORDON ELLIOT FRED V. OWEN WALTER HERALD W. MACQUEEN POPE
Stage Director ...		
Stage Manager ...		
Press Representative		

General Manager (for Prince Edward Theatre) GEORGE HARRIS

Box Office (R. F. BROWN) 10 a.m. to 10 p.m.
Regent 1527 (3 lines)

SMOKING PERMITTED

Extracts from the Rules made by the Lord Chamberlain.—1.—The name of the actual and responsible Manager of the Theatre must be printed on every playbill. 2.—The Public can leave the Theatre at the end of the performance by all exit and entrance doors which must open outwards. 3.—Where there is a fireproof screen to the proscenium opening it must be lowered at least once during every performance to ensure its being in proper working order. 4.—Smoking is permitted in the auditorium. 5.—All gangways, passages and staircases must be kept free from chairs or any other obstructions, whether permanent or temporary.



Pascall Louis XV. Chocolates are obtainable from the attendants

SMOKING BEING PERMITTED
in the auditorium at this theatre

the audience is reminded—

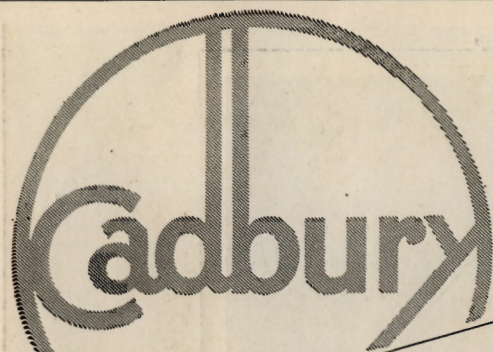
ABDULLAS
for Choice!



WILFRED
BABBAGE



ARTHUR
MACRAE



Ask!
the Attendant
for
**CADBURY'S
CHOCOLATES**



From the
factory in
a garden—**BOURNVILLE**

Schweppees

Soda Water,
Ginger Ale,
Tonic Water,
Devonshire Cider,
Lemon Squash etc.

ASK FOR A
WHISKY AND "SCHWEPLET"

BOOTH'S

DRY GIN



Established 1740

The **ONLY GIN** supplied
at the Bars of this Theatre

Say
"OLD ORKNEY"



**REAL LIQUEUR WHISKY
AT ALL BARS**



AFTERNOON TEAS

The Management
desire to draw the attention of their
Patrons to the Special Service of
Afternoon Teas which are
served by the Attendants
in the Auditorium

To facilitate service, Patrons are
requested to kindly order from the
Attendants in advance



McNISH'S SPECIAL SCOTCH WHISKY

"The Whisky you ask for again"

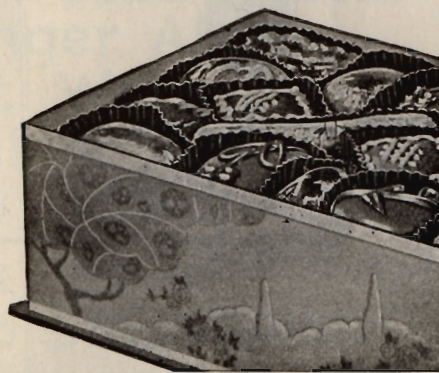
"Your ultimate selection"

Robt. McNish & Co. Ltd., Glasgow & London
An Independent House of over 70 years' standing

ON SALE AT THE BARS OF THIS THEATRE



"The best of Shows,"
says Mr. Wise,
"Is better with a
box of Fry's."



FB 8-400 Issued by the House of Fry
Established 1728

CORDON BLEU

COGNAC

THE LIQUEUR BRANDY MATURED BY

35 YEARS IN MARTELL'S CASKS

MARTELL'S CORDON BLEU and THREE STAR
(THE ONLY BRANDIES SUPPLIED AT THIS THEATRE)

DE KUYPER'S
SQUAREFACE HOLLANDS

DIXON'S

DOUBLE  DIAMOND
PORT

MORGAN'S
WHITE PORT & SHERRY

All Exclusively Supplied at the Bars of this Theatre

Afternoon TEA

consisting of a Pot of
freshly-made Tea,
Bread and Butter
(Best English Butter)
and Cake is served
during the Interval at
an inclusive charge of
EIGHTPENCE

It will greatly facilitate service if Visitors will kindly
order from the Attendant prior to the Interval